



Conestoga-Rovers & Associates Project Summary

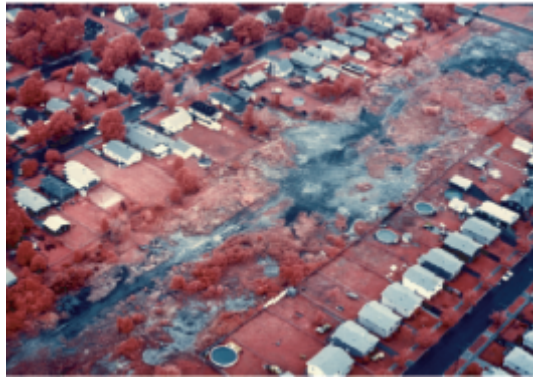
KEY PROJECT ELEMENTS

- Superfund Site
- Landfill Remediation
- Hazardous Waste Management
- Public Health and Safety/Liaison
- Operation, Maintenance, and Monitoring

GENERAL INQUIRIES:
info@CRAworld.com

WEB SITE:
www.CRAworld.com

LOVE CANAL SITE NIAGARA FALLS, NEW YORK



PRP GROUP
DURATION: 1977 - Present

The Love Canal Landfill was an open trench that was filled with hazardous chlorinated organic wastes from a chemical plant in Niagara Falls, New York during the 1940s and 1950s. A residential area and elementary school were constructed immediately adjacent to the former landfill (three blocks long) in the 1960s, resulting in an environmental disaster that eventually prompted the initiation of the Superfund Legislation in the United States. CRA's involvement at Love Canal began in 1977, shortly after the chemical wastes were discovered in the backyards of the homes along the Canal. CRA was retained to investigate the chemical presence and to develop a plan to address the issues. CRA developed an understanding of the hydrogeology and chemical presence, designed a remedial plan, provided construction oversight for its implementation, and has been involved in operation, maintenance, and monitoring over the years.

The remedial plan concept involved surrounding the Site with a "french drain" containing a collection tile (one of the first sites to consider such containment). Lateral trenches were constructed between the main collection tile and the areas containing evidence of disposal and highly contaminated leachate. The permeable material of the backfilled trenches allowed migrating leachate to move into the collection tile and flow to containment tanks. From these tanks, the contaminated water was taken to a treatment facility designed by CRA and treated to specific criteria before discharge. The entire Site was contained by the drainage and collection system, and a low permeable cap of clay materials was constructed over the site in order to minimize future infiltration.

Due to the uncertainty at the time regarding the impact of hazardous chemical wastes on local residents, CRA's involvement became highly focused on health and safety issues and the development of appropriate plans to protect the residents, workers, and the environment. Continuous involvement in public meetings also became the norm. As there were no contractors available with environmental experience, the oversight process became a teaching and learning process for all involved.

This Site was delisted from the National Priorities List on September 30, 2004.